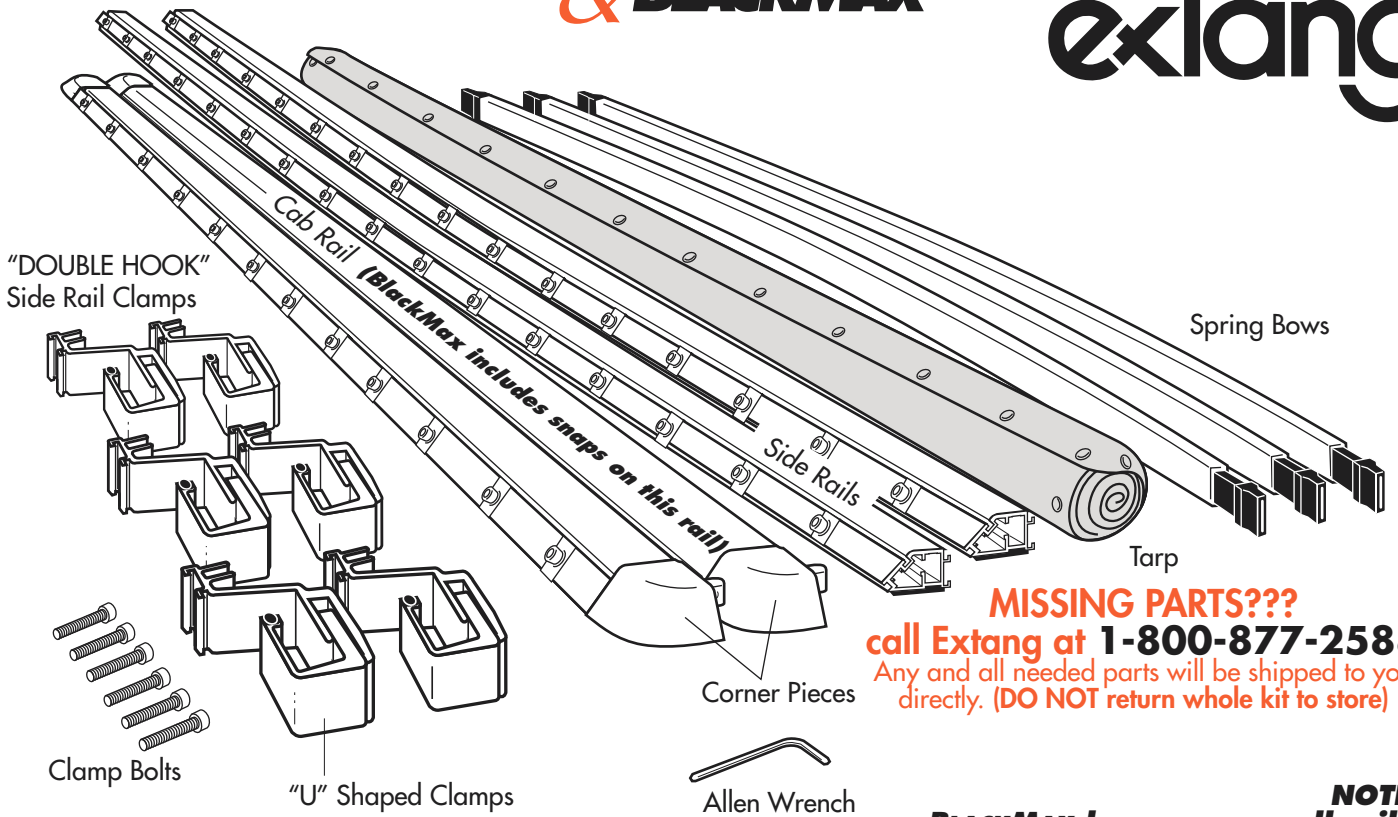


# INSTALLATION SHEET-Ford Flareside '97-

Part Nos. 7615, 2615

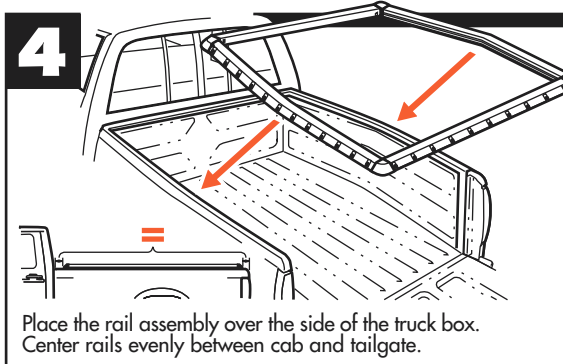
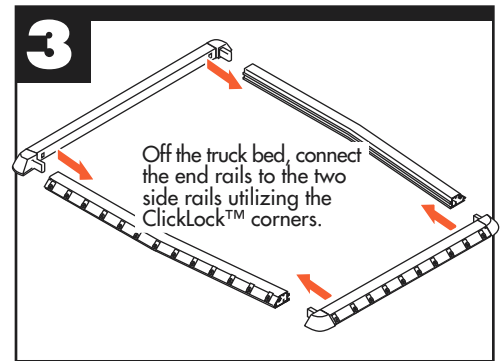
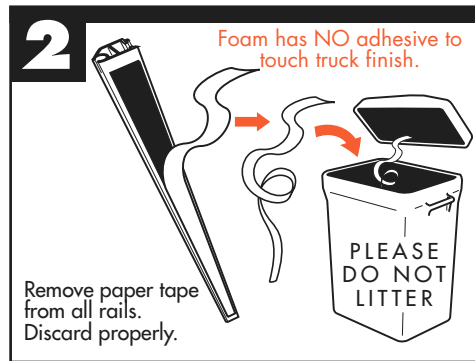
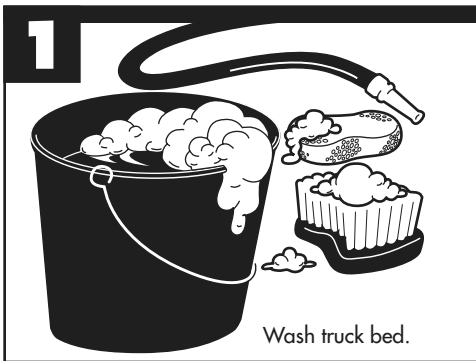
CLASSIC  
**PLATINUM & BLACKMAX™**



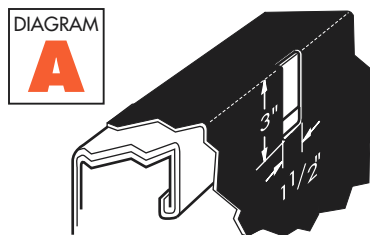
**MISSING PARTS???**  
call Extang at **1-800-877-2588**  
Any and all needed parts will be shipped to you directly. (DO NOT return whole kit to store)

**NOTE:**  
**BLACKMAX has snaps on all rails.**

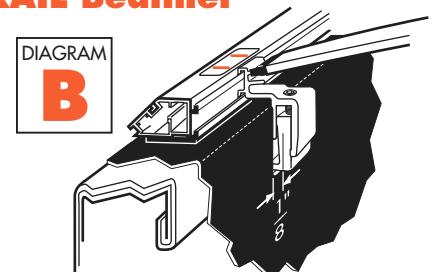
PARTS INCLUDED IN YOUR KIT. You may want to lay them out in this manner for accessibility.



## For an OVER-THE-RAIL Bedliner



For each clamp mark on your bedliner a 1-1/2" x 3" hole as shown above. Remove clamp. Cut holes in bedliner. Reinsert side rail clamp. Return to step 6.



Side rail clamped to bed with bow attached.

**extang**  
Stands for Quality

Extang Corporation  
1901 E. Ellsworth Rd.  
Ann Arbor, MI 48108  
734 677-0444, Fax: 734 677-8409

Visit us at:  
**www.extang.com**

Item No. 0015-1202RH Printed in U.S.A.

5

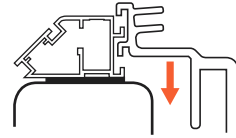
**Side Rail Clamp Spacing (Same for each side)**

See the stickers located on each side rail for clamp position, or refer to the dimensions given below.

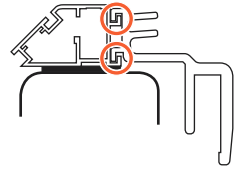
Note: Remove stickers after installation.

**Install one middle clamp first and then install the opposite middle clamp next.** Note: You will need to push the frame assembly in slightly to install the second middle clamp.

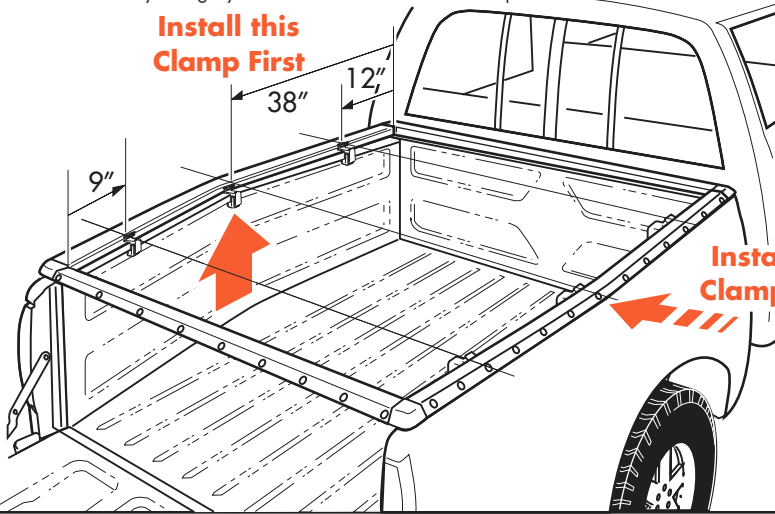
Place Clamp Here  
STICKER



Insert side rail clamp all the way into rail.

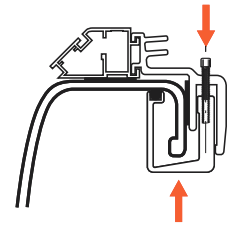


**Install this Clamp First**



**Install this Clamp Next**

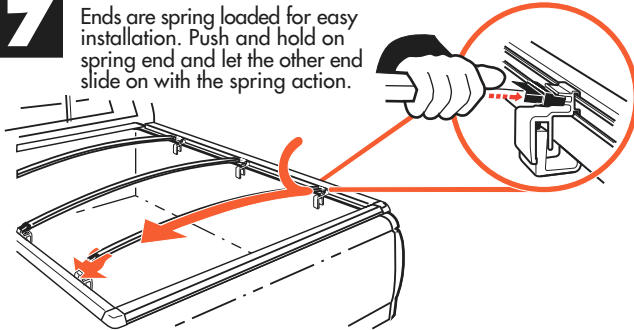
6



Attach "U" clamp to side rail clamp with allen bolt. Insert side rail clamp all the way into rail.

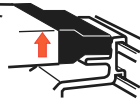
7

Ends are spring loaded for easy installation. Push and hold on spring end and let the other end slide on with the spring action.

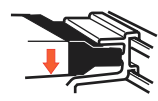


Insert bow onto top or bottom peg. (Top peg for performance, Bottom for good looks.)

Upper Peg



or



Lower Peg

**SPECIAL FEATURE:** Two pegs offer two height adjustments.

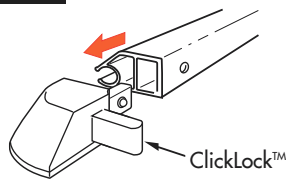
Note: Bow End does not fit between pegs.



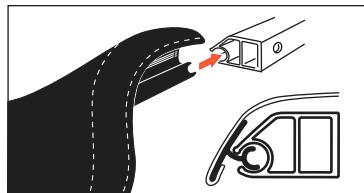
Do Not Place Between the Pegs

8

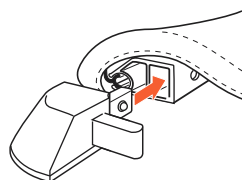
**For Classic Platinum Only (This step does not apply to BlackMax)**



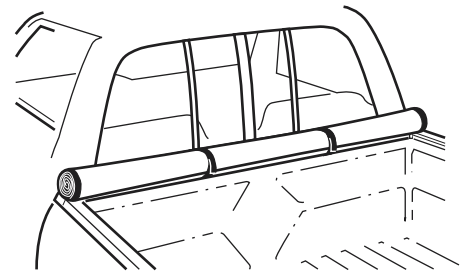
Depress the ClickLock™ release and remove one corner from cab rail.



Feed tarp dowel into cab rail. (NOTE: For easiest feeding action, place tarp on a flat smooth surface, and keep dowel straight while feeding into cab rail. Caution, pavement may scuff tarp.)



Reinsert corner piece into cab rail until it "clicks" and locks into place.



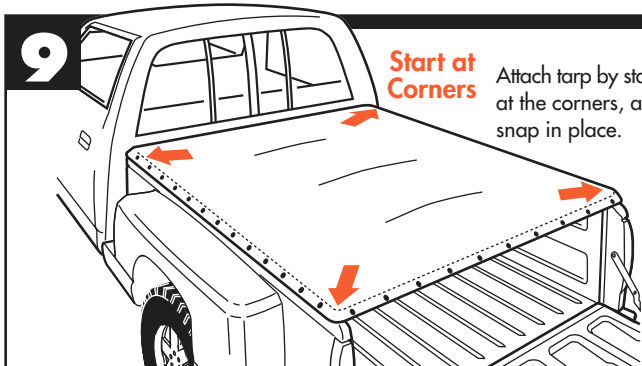
**EASY USE OF TRUCK BED**

Tarp may be rolled up and secured with Velcro® for bulk hauling

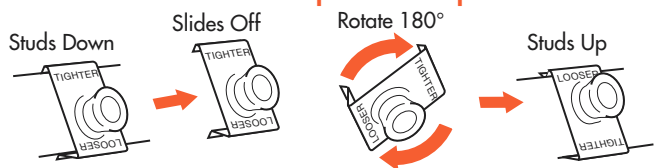
9

**Start at Corners**

Attach tarp by starting at the corners, and snap in place.



**SPECIAL FEATURE Weather-adjustable Snaps**



**SUMMER SETTING**  
Takes up slack in tarp caused by warm weather.

**WINTER SETTING**  
Allows more slack in tarp for cold temperatures.